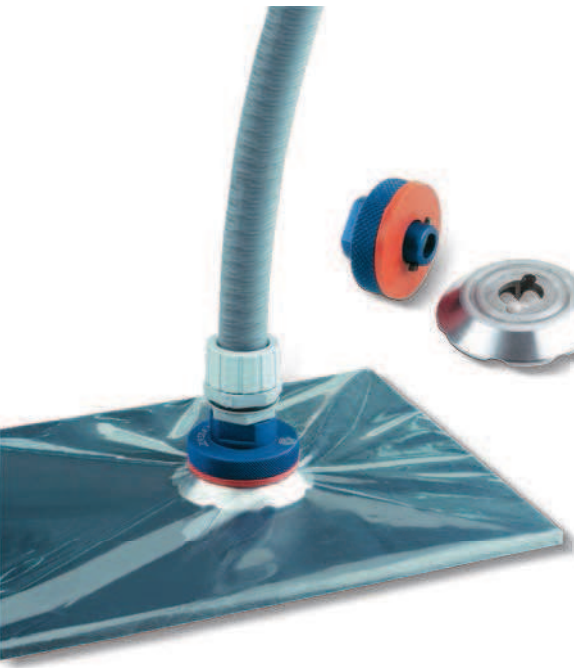


SUCTION VALVES FOR VACUUM PRESS BAGS



The suction valves described in this page have been designed for a quick vacuum connection on press bags for composite fibre products. These valves are composed of a steel distributor, to be inserted inside the bag, equipped with a cam housing suitable for the quick coupler for the vacuum connection. The latter is made with reeded and anodised aluminium and is easily coupled with the distributor by simply rotating it on its axis by 90°, once it's been inserted.

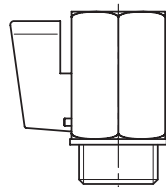
A silicon seal to be placed between the two elements and the press bag, guarantees a perfect vacuum seal.

Manual 2-way valves, quick couplers or simply flexible pipe fittings can be assembled onto these valves.

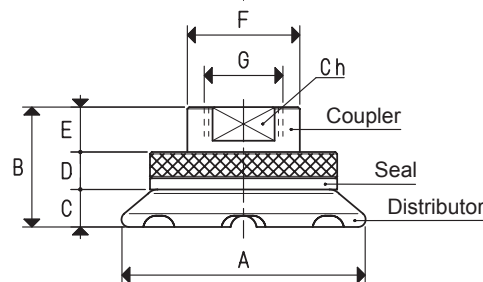
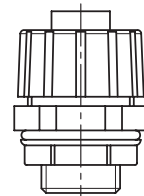
They are currently available in the two versions indicated in the table, but can be provided in different sizes and shapes upon request for a minimum amount.

Quick coupling

2-way manual valve



TPR pipe fitting



Art.	Max. capacity recommended cum/h	Hole to be made on the sack \emptyset	Manual 2-way valve art.	Quick Coupler art.	TPR pipe fitting art.	Weight g	A \emptyset	B	C	D	E	F \emptyset	G \emptyset	Ch
VSS 3/8"	10	16	13 02 11	RR3/8"	RTPR3/8"	178	60	32	10	13	9	24	G3/8"	19
VSS 1/2"	20	19	13 03 11	RR1/2"	RTPR1/2"	218	65	35	10	13	12	30	G1/2"	25

Note: 2-way valves are not integral part of the suction valve and therefore, must be ordered separately.

Conversion ratio: inch = $\frac{\text{mm}}{25.4}$; pounds = $\frac{\text{g}}{453.6}$ = $\frac{\text{Kg}}{0.4536}$

GAS-NPT thread adapters available at page 1.117