

FLAT CIRCULAR CUPS WITH VULCANISED SUPPORT, FOR CLAMPING GLASS AND MARBLE

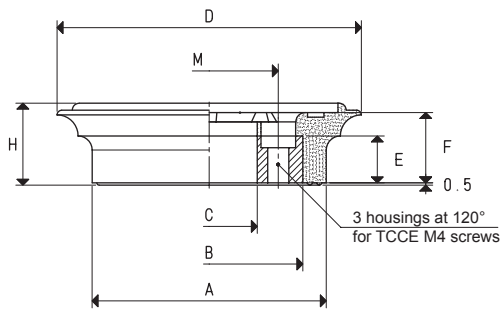
The manufacturers of glass and marble machining centres require increasingly accurate and safe clamping systems. This has led us to creating this new series of cups.

They are vulcanised onto a steel support and are provided with a hole in the centre for vacuum connection or for a BALL VALVE, as well as with 3÷4 holes on the internal circumference for housing allen screws.

Their extremely flexible lip allows them to easily adapt themselves to the sheets to be held, with no risk of deformation or rupture, even for the thinnest ones. The particular internal support plane of these cups ensure a high friction coefficient with the gripping surface and especially a considerable grip on wet glass and marble sheets, thanks to the water drainage. All this guarantees a firm and safe grip.

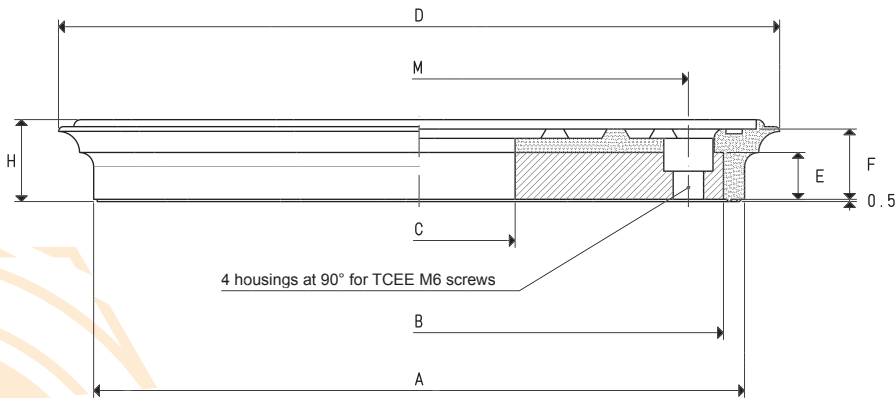
Furthermore, these cups feature the highest accuracy of their thickness, whose nominal height has a tolerance of only five hundredths of millimetre.

They are normally produced with oil-resistant rubber A, but they can be ordered in other compounds, listed at page 21, upon request and in minimum quantities to be defined in the order.



CUPS WITH VULCANISED SUPPORT

Art.	Force Kg	A Ø	B Ø	C Ø	D Ø	E	F	H	M Ø	Support material	Weight Kg
08 65 11 A	6.7	50	40	20.5	65	10	15	17.5	29.5	steel	0.09
08 85 11 A	12.0	70	60	40.5	85	10	15	17.5	49.5	steel	0.14



CUP WITH VULCANISED SUPPORT

Art.	Force Kg	A Ø	B Ø	C Ø	D Ø	E	F	H	M Ø	Support material	Weight Kg
08 150 11 A	42.7	139	130	41	150	10	15	17.5	115	steel	1.0

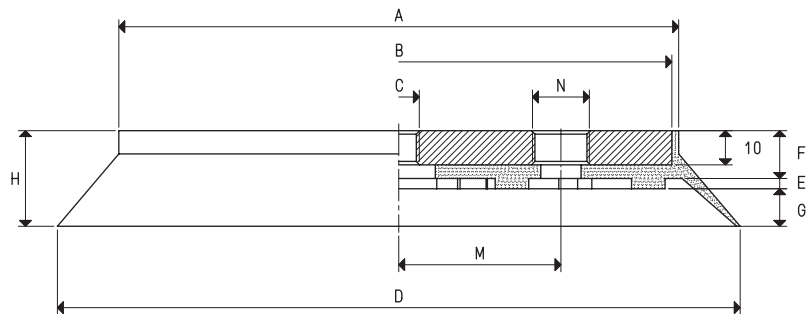
3D drawings available at www.vuototecnica.net

FLAT CIRCULAR CUPS WITH VULCANISED SUPPORT



These cups have been designed for lifting and handling heavy loads, both vertically and horizontally. They are vulcanised onto a steel support and are provided with a central threaded hole for its fastening to the machine and with a side threaded hole for its vacuum connection.

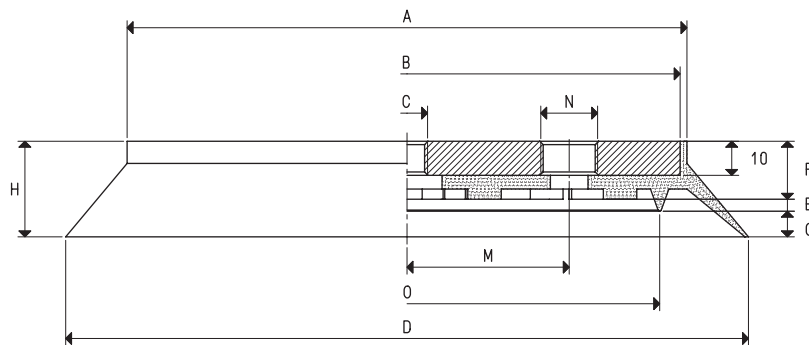
These cups have a labyrinth grooved face made with the same compound as the cup, which allows gripping even the thinnest and most fragile glass and marble sheets, with no bending in the gripping area. The shape of its lip and the choice of the compound with which they are made with, ensure a firm grip on uneven and corrugated surfaces. The 08 .. 40 series, along with sharing the same features, have an internal vertical lip which allows them to grip extremely rough surfaces, such as embossed or profiled metal sheets, sawn marble or granite, wooden boards, precast cement, etc.



CUPS WITH VULCANISED SUPPORT

Art.	Force Kg	A Ø	B Ø	C Ø	D Ø	E	F	G	H	M	N Ø	Support material	Weight Kg
08 110 15 M8 *	23.7	74	70	M8	110	2	14	10	26	26.0	G1/4"	steel	0.35
08 110 15 *	23.7	74	70	M12	110	2	14	10	26	26.0	G1/4"	steel	0.33
08 150 15 *	45.0	115	110	M12	150	2	14	10	26	40.0	G3/8"	steel	0.83
08 200 10 *	78.5	164	160	M12	200	3	14	11	28	47.5	G3/8"	steel	1.75
08 250 10 *	122.6	214	210	M12	250	3	14	11	28	72.5	G3/8"	steel	3.00
08 300 10 *	176.6	266	260	M16	300	5	15	11	31	89.0	G1/2"	steel	4.70
08 350 10 *	240.4	316	310	M16	350	5	15	11	31	89.0	G1/2"	steel	6.60

* Complete the code indicating the compound: A= oil-resistant rubber; N= natural para rubber; S= silicon



CUPS WITH VULCANISED SUPPORT

Art.	Force Kg	A Ø	B Ø	C Ø	D Ø	E	F	G	H	M	N Ø	O Ø	Support material	Weight Kg
08 110 40 M8*	15.5	74	70	M8	110	3	16	7	26	26.0	G1/4"	68	steel	0.36
08 110 40 *	15.5	74	70	M12	110	3	16	7	26	26.0	G1/4"	68	steel	0.34
08 150 40 *	22.8	115	110	M12	150	3	16	7	26	40.0	G3/8"	105	steel	0.85
08 200 40 *	45.0	164	160	M12	200	3	17	8	28	47.5	G3/8"	148	steel	1.70
08 250 40 *	78.5	214	210	M12	250	3	17	8	28	72.5	G3/8"	196	steel	3.00
08 300 40 *	122.6	266	260	M16	300	3	18	10	31	89.0	G1/2"	248	steel	4.60
08 350 40 *	176.6	316	310	M16	350	3	18	10	31	89.0	G1/2"	298	steel	6.50

* Complete the code indicating the compound: A= oil-resistant rubber; N= natural para rubber; S= silicon

Conversion ratio: inch = $\frac{mm}{25.4}$; pounds = $\frac{g}{453.6}$ = $\frac{Kg}{0.4536}$

GAS - NPT thread adapters available at page 1.117

FLAT CIRCULAR CUP WITH VULCANISED SUPPORT

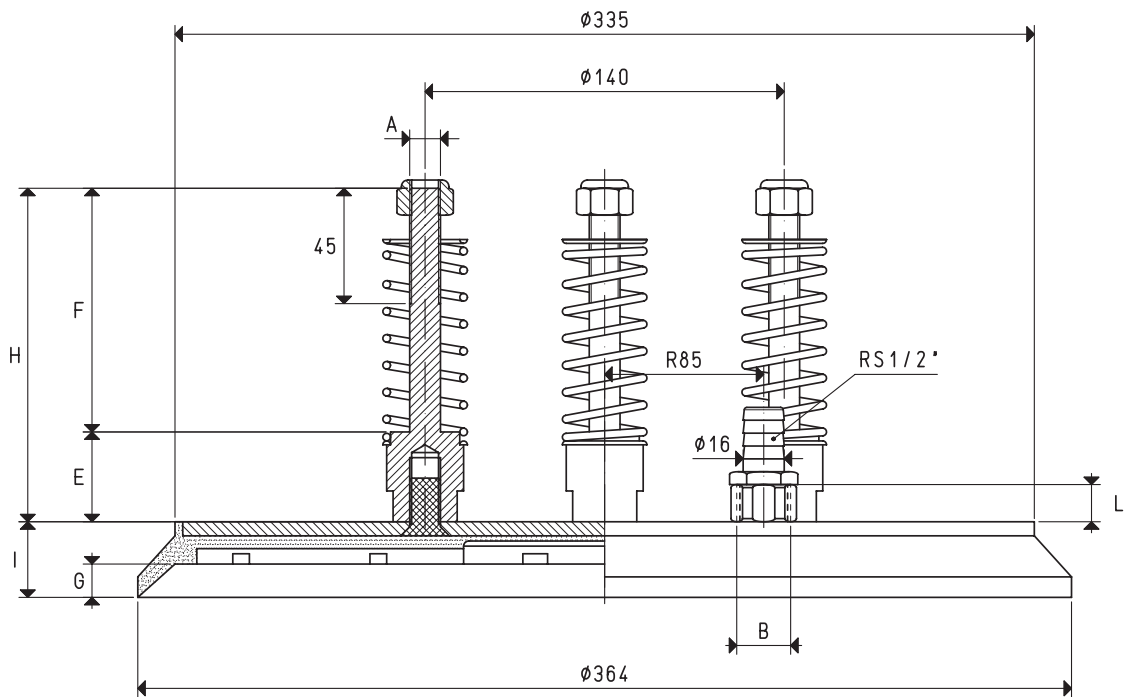
These cups are recommended for handling very heavy loads both vertically and horizontally.

They are vulcanised onto a steel support and have a labyrinth graved face made in the same compound as the cup.

The support is provided with four steel pins with self-locking nuts for guiding the cups and fastening them to the machine, as well as with a threaded sleeve for vacuum connection.

Moreover, these cups are provided with four springs to cushion its impact with the load to be lifted.

These cups are available in the three standard compounds.



CUPS WITH VULCANISED SUPPORT

Art.	Force Kg	A Ø	B Ø	E	F	G	H	I	L	Support material	Weight Kg
08 360 10 *	254.3	M12	G1/2"	35	95	13	130	29	16	steel	4.75

* Complete the code indicating the compound: A= oil-resistant rubber; N= natural para rubber; S= silicon